

Dr. Sabharwal's WOUND CARE

Committed to Health care....



from
US FDA
Audited
Manufacturer

TRANSDERMAL PATCHES WITH:

- Lidocaine
- Lidocaine with Menthol
- Camphor, Menthol & Methyl Salicylate
- Diclofenac
- Prometazine
- Diclofenac with Essential oils
- Diclofenac, Promethazine with essential oils
- Nicotine Patch

ISO 9001:2008 & ISO 13485:2012
Certified Company

Administrative Office:

1019, Sector 27-B, Chandigarh-160019, India

Telephone: +91 172 2640018

Telefax: +91 172 2640019

E-mail: buyers@drsabharwal.in

Website: www.drsabharwal.com



US FDA Audited Factory for Patches



Lidocaine Patch

Temporary relief of pain for back, neck, shoulders, knees and elbows. Desensitize aggravated nerves. Apply for up to 8 hours. Easy application. Individually packed. All direction stretchable.

Lidocaine 4% Gel Patch

Lidocaine 4% with Menthol 1% Patch

Temporarily relieves minor pain associated with: arthritis, simple backache, bursitis, tendonitis, muscle strains, sprains & bruises. Desensitize aggravated nerves. Apply for up to 8 hours. Easy application. Individually packed. All direction stretchable.



Lidocaine 5% Patch 700mg Gel Patch - Lidopatch

Foot Patch

Profoot Pain Relief Patches is fast acting relief for the most sensitive part of the body containing more the most nerves. The only patch designed with your feet in mind.

Ingredients: Camphor, Menthol & Methyl Salicylate deeply penetrate to numb away pain and is maximum amount of pain relief available with out a prescription.



Panther Plast 200

Diclofenac transdermal patch used to treat pain caused by minor sprains, strains, or bruises.



No Pain Patch

It is a topical pain patch for muscles and joints aches and pains associated with arthritis, sprains, strains, bruises and simple backache. It contains the best powerful rubeficients & pain fighting ingredients like Diclofenac, Promethazine Hydrochloride, Methyl Salicylate, Menthol & Camphor.





XL Bella Plaster

Belladonna Plaster consists of a suitable cloth of cotton or rayon or both mixed, evenly coated with adhesive mass containing Belladonna Extract. The plaster is perforated & the adhesive surface is protected with printed /plain silicon paper. Provides temporary relief from pain by producing heat. It is used as counter irritant & to produce heat on undamaged skin. It is used in Rheumatic conditions.

Deep Reach Rheumatic Plaster

Contains Capsicum Oleoresin 0.5% w/w, Methyl Salicylate 4% w/w, Menthol 0.5% w/w, Camphor 1% w/w, Thymol 1% w/w & Eucalyptus Oil 3% w/w.

A powerful remedy for muscular pains or strain, stiff neck & aching shoulders, back ache or lumbago.

XL Capsiplast

Capsicum Plaster consists of a suitable cloth of cotton or rayon or both mixed, evenly spread with self adhesive mass containing Capsicum Oleoresin. The plaster is performed evenly & the adhesive surface is protected with silicon based release paper.

Capsicum Plaster is used as a counter-irritant and to produce heat on undamaged skin. It is used in the treatment of Rheumatic conditions.

Ketofen Patch

Is effective in the treatment of a variety of acute and chronic muscular pains. Ketoprofen Patch is used for the relief of local pain induced by inflammation of joints, arthritis, strains and sprains..

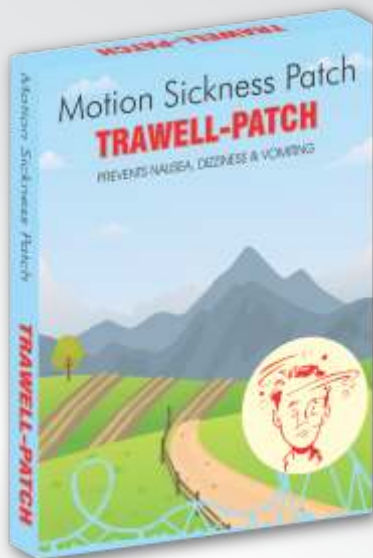
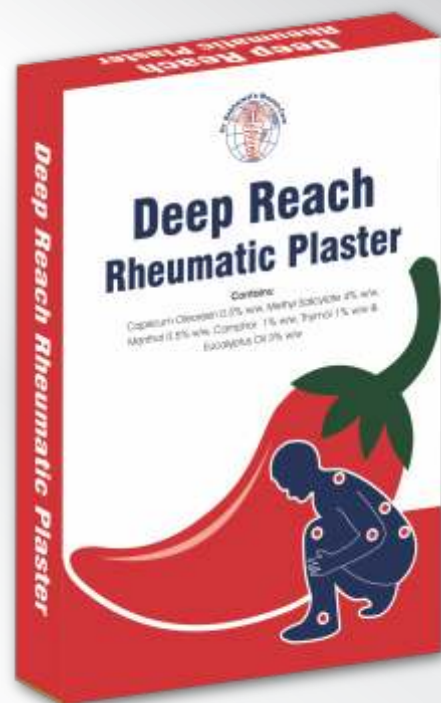
Motion Sickness Patch Trawell Patch

Patch Contains Promethazine Hydrochloride I.P. 5% w/w in adhesive base.

It is used to prevent or treat motion sickness. It is also used to prevent or treat nausea (feeling sick) and vomiting.

Nicotine Transdermal Patch Nico Patch

Nicotine Patch helps you to quit smoking using the principle of Nicotine Replacement Therapy. The patch when placed on your body gradually provides a measured dose of harmless nicotine through the skin over the period of 24 hours. As the nicotine doses are lowered over a course of 12 weeks, the tobacco users have weaned off nicotine slowly & steadily, minimizing the withdrawal symptoms. It is a unique patch with smart time release technology that helps in preventing the urge to smoke all day long. It helps in supporting you through your day by delivering remedial nicotine via the patch's specially designed layers. This technology ensures a steady and all day release so that the nicotine in the patch will not be delivered all at once.



CHLORO TULLE

- A non-adherent dressing
- Ready for immediate use
- Contains:
 - 1.4. Gauze impregnated with paraffin & having Chlorhexidine Acetate 0.05 w/w
- Instructions for Use:
 - Peel open pouch. Fit the dressing with sterile forceps & apply on cleaned wound
- Warnings:
 - Do not restock the contents
 - Do not use if seal is broken or pouch is damaged
 - Do not use if change to any ingredient is known
 - For external single use only
 - Store flat in a well-ventilated place away from sunlight below 30°C
 - The dressing should be changed after 12 hours to 48 hours or as per the condition of the wound
- Intended Use:
 - The dressing is applied to prevent bacterial growth and to help healing. For external use only
- Single use pack of 10cm x 10cm

Mfg. In India by: D.L. No. MNB/06/048
Dr. Sabharwal's Wound Care
137 Burewada, Barotwada (P.R.), India - 174 103
Manager QA
Customer Care Call India No.: +91 172 2640019
Email: buyers@drsabharwal.in

Ashtak Kumar Surti, Flat 8, 20 North Park Road, Bradford, BD 94 9T U.K.

STERILE R



(01268037620)1913

PEEL
OPEN

Paraffin Gauze Dressing B.P. 93 Excel Tulle

Leno weave cotton gauze impregnated with an ointment of soft paraffin, Gamma Sterile.

EXCEL TULLE™ Paraffin Gauze Dressing B.P. 93

- A non-adherent dressing
- Ready for immediate use
- Single use pack of 10cm x 10cm
- Instructions for Use:
 - Peel open pouch. Fit the dressing with sterile forceps & apply on cleaned wound
- Warnings:
 - Do not restock the contents
 - Do not use if seal is broken or pouch is damaged
 - Do not use if change to any ingredient is known
 - For external single use only
 - Store flat in a well-ventilated place away from sunlight below 30°C
- Product Code: 114.1

Mfg. In India by: D.L. No. MNB/06/048
Dr. Sabharwal's Wound Care
137 Burewada, Barotwada (P.R.), India - 174 103
Manager QA
Customer Care Call India No.: +91 172 2640019
Email: buyers@drsabharwal.in

Ashtak Kumar Surti, Flat 8, 20 North Park Road, Bradford, BD 94 9T U.K.

STERILE R



(01268037620)1914

PEEL
OPEN

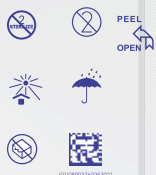
N.T. BIOTIC TULLE Neomycin (Fradimycin), Bacitracin and Polymixin B Sulphate Tulle

- A non-adherent dressing
- Ready for immediate use
- Contains:
 - 1.4. Gauze impregnated with ointment containing per 1 gram: Polymixin B Sulphate USP 5000 Units, Bacitracin Zinc USP 400 Units & Neomycin Sulphate USP (Fradiomycin) 3600 Units
- Instructions for Use:
 - Peel open pouch. Fit the dressing with sterile forceps & apply on cleaned wound and covered with sterile absorbent pad
- Warnings:
 - Do not restock the contents
 - Do not use if seal is broken or pouch is damaged
 - Do not use if change to any ingredient is known
 - For external single use only
 - To be used on doctor's prescription
 - Store flat in a well-ventilated cool dry place away from heat & sunlight
- Intended Use:
 - Useful to prevent infections in wounds, burns & skin grafts as a non-adherent dressing
- Single use pack of 10cm x 10cm

Mfg. In India by: D.L. No. MNB/06/048
Dr. Sabharwal's Wound Care
137 Burewada, Barotwada (P.R.), India - 174 103
Manager QA
Customer Care Call India No.: +91 172 2640019
Email: buyers@drsabharwal.in

Ashtak Kumar Surti, Flat 8, 20 North Park Road, Bradford, BD 94 9T U.K.

STERILE R



(01268037620)2021

PEEL
OPEN

Povidone-Iodine Gauze Dressing Pipdine Tulle

It consists of a knitted synthetic close weave fabric impregnated with polyethylene glycol (PEG) base containing 10% Povidone-Iodine.

Dr. Sabharwal's Povidone Iodine Gauze Dressing PIPDINE 10% Tulle Silky Non-Adherent Close Weave Gauze

P.I.P.D. Non-Adherent Dressing
Nichthaftende Wundauflage (P.I.P.D.)
Non-adherent non-adherent (P.I.P.D.)
Medicamento non-adherente (P.I.P.D.)
Apósito no-adherente (P.I.P.D.)
Bawe vichhritana bandhan (P.I.P.D.)

- A non-adherent dressing
- Ready for immediate use
- Contains:
 - Gauze impregnated with PEG ointment base containing Povidone-Iodine 10% w/w
- Instructions for Use:
 - Peel open pouch. Fit the dressing with sterile forceps & apply on cleaned wound
- Warnings:
 - Do not restock the contents
 - Do not use if seal is broken or pouch is damaged
 - Do not use if change to any ingredient is known
 - For external single use only
 - To be used on doctor's prescription
 - Store flat in a well-ventilated cool dry place away from heat & sunlight
- Intended Use:
 - The dressing is designed to protect the wound, assist in infected area for the management of abscesses and may also be used for the prevention of infection in minor burns and minor trauma as the gauze

Mfg. In India by: D.L. No. MNB/06/048
Dr. Sabharwal's Wound Care
137 Burewada, Barotwada (P.R.), India - 174 103
Manager QA
Customer Care Call India No.: +91 172 2640019
Email: buyers@drsabharwal.in

Ashtak Kumar Surti, Flat 8, 20 North Park Road, Bradford, BD 94 9T U.K.

PEEL OPEN

STERILE R



(01268037620)2021

Silver Sulphadiazine Gauze Dressing Silva Tulle

Available:-
Individually packed in peelable aluminium foil pouch.
Also in ABS or Aluminium container

Sizes Available:-
5cm x 5cm, 10cm x 10cm
10cm x 15cm, 10cm x 20cm, 10cm x 30cm, 10cm x 40cm
15cm x 20cm, 15cm x 1m, 15cm x 2m
10cm x 7m or any in between sizes

Silver Sulphadiazine Tulle Silva Tulle

- A non-adherent dressing
- Ready for immediate use
- Single use pack of 10cm x 10cm
- Instructions for Use:
 - Peel open pouch. Fit the dressing with sterile forceps & apply on cleaned wound
- Warnings:
 - Do not restock the contents
 - Do not use if seal is broken or pouch is damaged
 - Do not use if change to any ingredient is known
 - For external single use only
 - Store flat in a well-ventilated place away from heat & sunlight
- Contains:
 - 1.4. Gauze impregnated with ointment containing Silver Sulphadiazine 1% w/w

Mfg. In India by: D.L. No. MNB/06/048
Dr. Sabharwal's Wound Care
137 Burewada, Barotwada (P.R.), India - 174 103
Manager QA
Customer Care Call India No.: +91 172 2640019
Email: buyers@drsabharwal.in

Ashtak Kumar Surti, Flat 8, 20 North Park Road, Bradford, BD 94 9T U.K.

STERILE R



(01268037620)2412

PEEL
OPEN

Also Available:
PU & POP Bandage
Adhesive Tape USP Cloth Base
Microporous Surgical Tape
Elasticated Tubular Bandage
Cotton Stockinette
Tubular Net Bandage
First Aid Dressings
Skin Traction Kit
Cannula Fixator
IPA Wipe